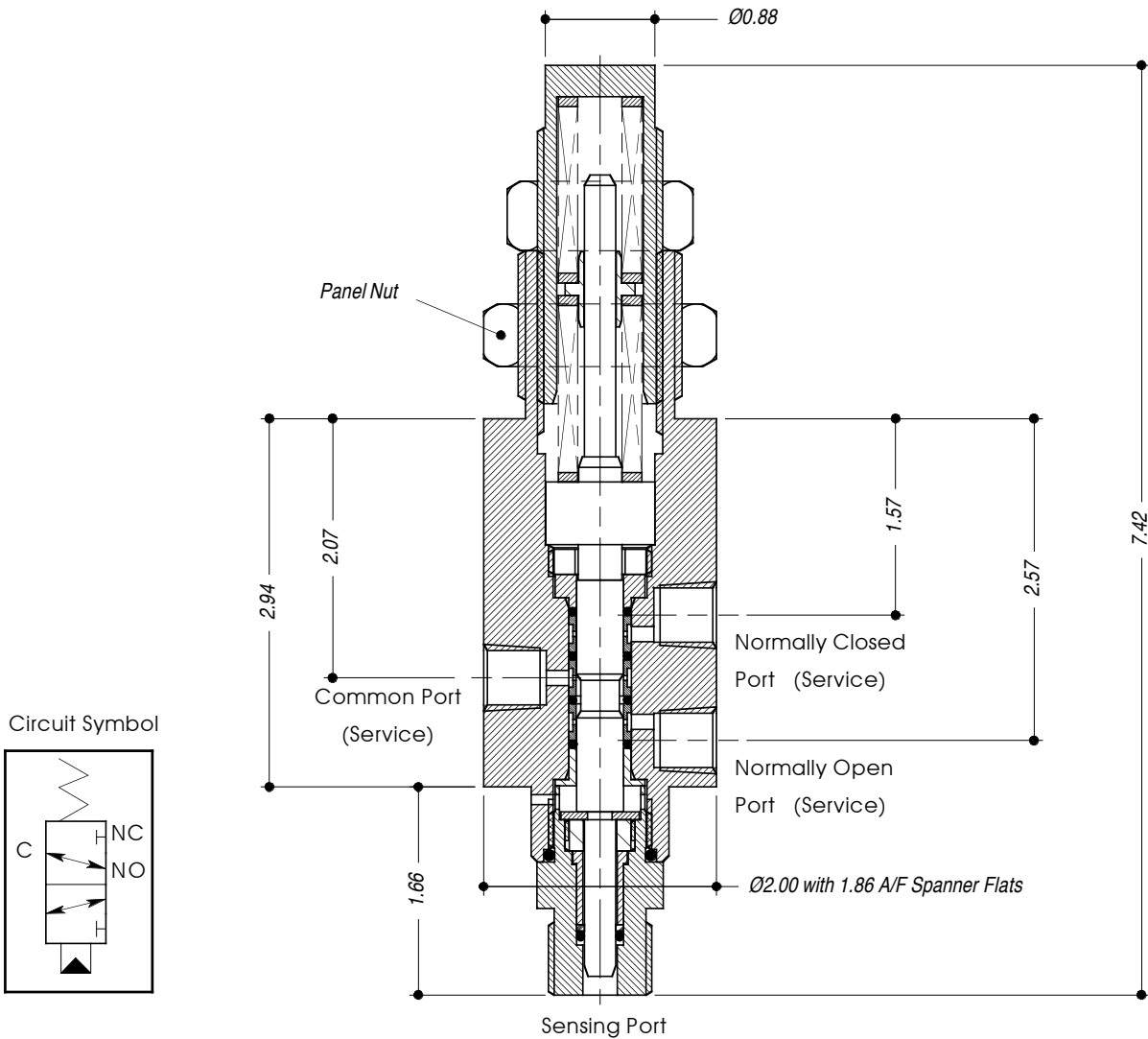


SENSING VALVE TYPES: 3SV25/37, 3SV25/50



Valves Ltd

- STAINLESS STEEL (316 / 1.4404)
- SUITABLE FOR LIQUID OR GAS USE.
- ALL DIMENSIONS IN INCHES.



TECHNICAL SPECIFICATION		ORDERING EXAMPLE
Valve Type:	3SV25/37 3SV25/50	3SV25/37
Porting / Connections Options:	P = BSP (Parallel) N = NPT (Taper)	N
Sensing Pressure Range:	0.1K - 1K psi, 0.9K - 3K psi, 2.8K - 6K psi	3K
Max. Control Press: Liquid/Gas	225 psi	
Sensing Port Connections:	3/8" 1/2"	
Service Ports: (3 off)	1/4" NPT only	
Seal Material:	Viton (other materials available by request)	
CV Value:	0.15 (Max)	
Dry Weight: (kg)	2.5	
Working Temperature Range:	-10°C to +120°C	

IMPORTANT: This valve is **NOT** to be used as a "safety device" (pressure limiting) as defined in the Pressure Equipment Directive 97/23/EC. When the control function of this unit is being used to limit pressure within a system, safety devices such as "safety relief" or "relief" valves must be fitted. **(See Section 7 for details).**